

QD-Series LED-backlit Display 75" | 84" | 98"

Size Matters:
See The Big Picture in 4K

LED

4K
ULTRA HD

Anti-Burn-in™

ON DUTY
24/7

The QD-Series are big. 4K UHD (3840 x 2160) resolution helps them make a big difference: rendering the finest details, replacing videowalls, and handling ultra-demanding graphic applications. Coming with durable metal housing and easily shifting between portrait and landscape modes, the QD-Series make a fitting choice for digital signage and videowalls of all specifications tailored to user needs.





60Hz



120Hz

Unparalleled Visual Quality

The high brightness, high contrast ratio, and black-level alignment deliver an impeccable visual experience. Built on IPS panel with 4 times FHD resolution, the QD-Series render exquisite video quality with motion blur reduction at a refresh rate of up to 120Hz*.

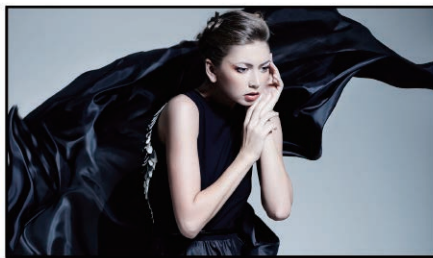
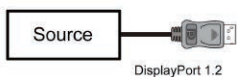
* 120Hz refresh rate supported by QD-85 & QD-98 models only

High Reliability

The QD-Series are crafted specifically to transcend the challenge of enduring 24/7 operations. AG Neovo's Anti-Burn-in™ technology also spares them ghosting while performing mission-critical nonstop operations. Metal casing and rigorously selected components not only help do the trick but also keep maintenance easy.



4K UHD @ 60 Hz



Easy to Display

The tiling-ready QD-Series can either stand alone replacing videowall set-ups or be arrayed in configurations of up to 10 x 15 videowalls. The QD-Series can also deliver 4K at 60 Hz by single DisplayPort 1.2 cable for the best visual quality.

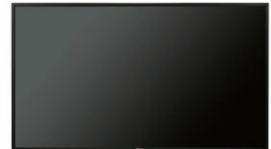
Multi-Screen Viewer

The Picture by Picture (PbP) function and up to four inputs mean it is possible to present multiple FHD screens for different operations in one display. With the multi-screen viewing capacity, the QD-Series become a sensible option for control centres, meeting rooms, and other public settings.



Features

- Versatile connectivity: HDMI, DisplayPort, VGA, DVI, CVBS, Component
- Daisy chain availability: DisplayPort, RS-232 and IR
- IR looping allows easy control via remote controller
- USB playback: USB plug and select on OSD for media content play function
- OPS slot ready for easy media player integration
- EcoSmart Sensor for low watt power consumption
- Built-in scheduler allows different programmer scheduling
- 8 handles mounted for easy lifting



Specifications

		QD-75	QD-84	QD-98
Panel	Panel Type	LED-Backlit TFT LCD (IPS Panel)	LED-Backlit TFT LCD (IPS Panel)	LED-Backlit TFT LCD (IPS Panel)
	Panel Size	74.5"	84.0"	98.0"
Frequency (H/V)	Max. Resolution	3840 x 2160 (UHD)	3840 x 2160 (UHD)	3840 x 2160 (UHD)
	Pixel Pitch	0.429 mm	0.4845 mm	0.5622 mm
	Brightness	410 cd/m ²	500 cd/m ²	500 cd/m ²
	Contrast Ratio	1,200 : 1	1,400 : 1	1,300 : 1
	Viewing Angle (H/V)	178°/178°	178°/178°	178°/178°
	Display Colour	1.07 B	1.07 B	1.06 B
	Response Time	4 ms	6 ms	4 ms
	H Freq.	32 kHz – 91 kHz	32 kHz – 91 kHz	32 kHz – 91 kHz
V Freq.	56 Hz – 75 Hz	56 Hz – 75 Hz	56 Hz – 75 Hz	
Input	VGA	15-Pin D-Sub	15-Pin D-Sub	15-Pin D-Sub
	DVI	24-Pin DVI-D	24-Pin DVI-D	24-Pin DVI-D
	HDMI	HDMI 2.0 X 3	HDMI 2.0 X 3	HDMI 2.0 X 3
	DisplayPort	DisplayPort 1.2a	DisplayPort 1.2a	DisplayPort 1.2a
	Component (YPbPr)	RCA	RCA	RCA
	CVBS	RCA (Share with component Y)	RCA (Share with component Y)	RCA (Share with component Y)
	USB	USB 2.0 x 1, Service Port x 1	USB 2.0 x 1, Service Port x 1	USB 2.0 x 1, Service Port x 1
Output	DisplayPort	DisplayPort 1.2a	DisplayPort 1.2a	DisplayPort 1.2a
	DVI-I	DVI-D	DVI-D	DVI-D
External Control	RS-232 in/out	2.5 mm Jack	2.5 mm Jack	2.5 mm Jack
	LAN	RJ45	RJ45	RJ45
	IR in/out	3.5 mm Jack	3.5 mm Jack	3.5 mm Jack
Audio	Audio In	Stereo audio jack for video (RCA) x 2, Stereo audio jack for PC (3.5 mm) x 1	Stereo audio jack for video (RCA) x 2, Stereo audio jack for PC (3.5 mm) x 1	Stereo audio jack for video (RCA) x 2, Stereo audio jack for PC (3.5 mm) x 1
	Audio Out	Stereo audio jack for PC (3.5 mm) x 1	Stereo audio jack for PC (3.5 mm) x 1	Stereo audio jack for PC (3.5 mm) x 1
	Internal Speaker	10 W x 2	10 W x 2	10 W x 2
	External Speaker	Jack with push button to switch internal / external	Jack with push button to switch internal / external	Jack with push button to switch internal / external
Power	Power Supply	Internal	Internal	Internal
	Power Requirements	100 - 240 V, 50 - 60 Hz	100 - 240 V, 50 - 60 Hz	100 - 240 V, 50 - 60 Hz
	Consumption	< 400 W (Max) < 0.5 W (Stand-by/Off)	< 600 W (Max) < 0.5 W (Stand-by/Off)	< 700 W (Max) < 0.5 W (Stand-by/Off)
Operating Conditions	Temperature	5°C ~ 40°C (41°F ~ 104°F) Landscape 5°C ~ 40°C (41°F~95°F) Portrait	5°C ~ 40°C (41°F ~ 104°F) Landscape 5°C ~ 40°C (41°F~95°F) Portrait	5°C ~ 40°C (41°F ~ 104°F) Landscape 5°C ~ 40°C (41°F~95°F) Portrait
	Humidity	20% ~ 80% (No condensation)	20% ~ 80% (No condensation)	20% ~ 80% (No condensation)
Storage Conditions	Temperature	-20°C ~ 60°C (-4°F~140°F)	-20°C ~ 60°C (-4°F~140°F)	-20°C ~ 60°C (-4°F~140°F)
	Humidity	10% ~ 90% (No condensation)	5% ~ 95% (No condensation)	5% ~ 95% (No condensation)
Mounting	VESA FPM/PMI	Yes (M8* 600 x 400 mm)	Yes (M8* 600 x 500 mm)	Yes (M8* 800 x 500 mm)
Dimensions	w/o Base (W x H x D)	1676.6 x 955.0 x 73.8 mm (Handle) (66.0" x 37.6" x 2.9")	1910.0 x 1102.0 x 77.8 mm (75.2" x 43.4" x 3.1")	2193.2 x 1248.2 x 89.8 mm (Handle) (86.4" x 49.1" x 3.5")
	Packaging (W x H x D)	1832.0 x 1283.0 x 280.0 mm (72.1" x 50.5" x 11.0")	2205.0 x 1429.0 x 474.0 mm (86.8" x 56.3" x 18.7")	2503.0 x 1569.0 x 450.0 mm (98.5" x 61.8" x 17.7")
Weight	w/o base	53.3 kg (117.5 lb)	70.0 kg (154.3 lb)	91.4 kg (201.5 lb)
	Packaging	65.5 kg (144.4 lb)	102.5 kg (226.0 lb)	134.5 kg (296.5 lb)
Accessories	Supplied	User Manual, Power Cord, 15-Pin D-sub Cable, Remote Control, RS-232 Cable, Daisy Chain Cable, Battery	CD ROM (User Manual), Power Cord, 15-Pin D-sub Cable, Remote Control, RS-232 Cable, Daisy Chain Cable, Battery	CD ROM (User Manual), Power Cord, 15-Pin D-sub Cable, Remote Control, RS-232 Cable, Daisy Chain Cable, Battery
Optional Accessories		Wall Mount: Large Mounting Kit: LMK-01, LMK-03	Wall Mount: Large Mounting Kit: LMK-03	Wall Mount: Large Mounting Kit: LMK-03

Global Headquarters

Taipei, Taiwan

EMEA Regional Headquarters

Capelle a/d IJssel, The Netherlands

North & South America Regional Headquarters

San Jose, CA, U.S.A.

Asia-Pacific Regional Headquarters

Taipei, Taiwan

Canada Sales Office

Vancouver, B.C., Canada

China Sales Office

Shanghai, China

Czech Republic Sales Office

Brno, Czech Republic

Denmark Sales Office

Stoevring, Denmark

Germany Sales Office

Mechernich, Germany

Italy Sales Office

Livorno, Italy

Poland Sales Office

Warsaw, Poland

Spain Sales Office

Barcelona, Spain

Ukraine Sales Office

Lviv, Ukraine

www.agneovo.com