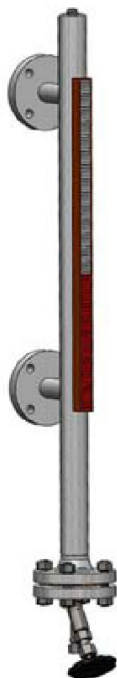


PRODUCT DESCRIPTION



Application and function

Magnetic level gauge is indirect level gauge. The boiler level is transmitted analogously 1:1 to the indicating ledge via the float. The product corresponds to the PED directive 97/23/EEC and has the CE mark no. 0035 of the notified body.

Applied rules as per TRD/AD2000 or ASME Boilers.

Technical information

- Standpipe stainless steel
- Process connection carbon steel
- Indicating ledge AL_-G (D-06-D-16311-0)
- Drain- and ventilation plug

Optional

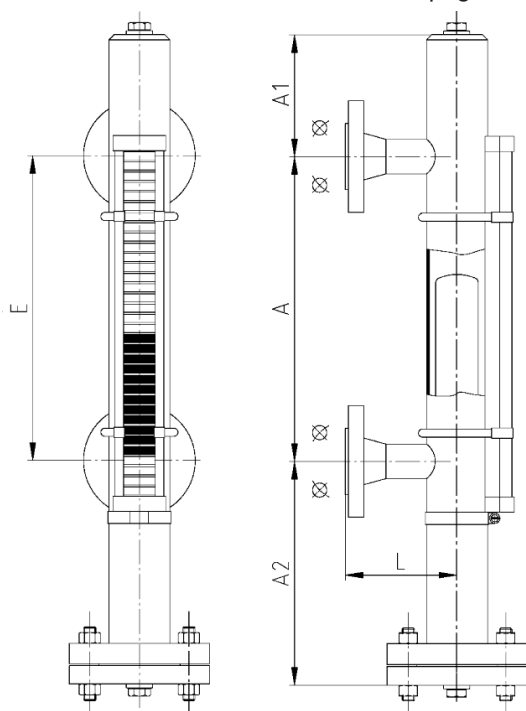
- Medium wetted parts completely stainless steel
- Drain valve AV 500, AV 520 (other drain valve on request)
- Magnetic switch type M510-1-60 (D-06-D-16312-0) for signalling
- Primary element type MRK (D-06-D-16313-0) with integrated R/I-converter, output 4-20 mA
- Light band indicator for remote level indication

Technical data

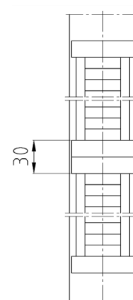
Allowable pressure	PS	[bar]	20	32	50	80
Allowable temperature	TS	[°C]	214	239	265	296
Drain valve	Type		AV500	AV520		

The indication ledge can be arranged in any position outside the areas of the connection studs. To indicate a range > 2,6 m it is necessary to use 2 or more superposed indicating ledges. For level gauges longer than 6 m, the unit will be delivered in divided version with intermediate flange.

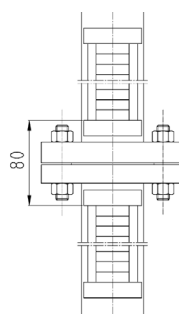
NA7-45 with ventilation- and drain plug



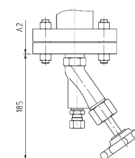
Measuring range > 2,6 m



Measuring range > 6 m

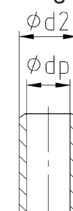


With drain valve

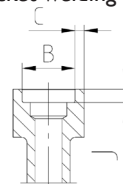


PROCESS CONNECTION

Welding end



Socket welding



All dimensions, weights and other technical data given are subject to revision.

PRODUCT DESCRIPTION



Application and function

The electronic remote water level gauge type PE2-xx / ERW lcd 2.0 can be used for steam boilers.

The conductive measuring principle is used to detect the water level height. Special processors evaluate the conductivity detected by the probes. The electronic processing is made in digital technology. The data are transmitted to the evaluating device by a 2-wire bus according to RS485. The water level can be indicated both graphically and numerically on the illuminated LCD of the evaluating device ERW lcd 2.0. The following numerical indications can be selected: "percent, millimetre, litre, tons" etc.

Four relays functions as limit switches with separate switch points. Two additional special relays work together as SMC-limit switch, which behaves as low water level switch. Further indicating instruments can be connected by two 4-20mA interfaces.

The probe distribution on the standpipe can also be made in irregular gaps by the desired measuring range depending on the customer's demand. The basic settings are carried out in our factory. Modifications / corrections can be programmed with the setting assistance.

The settings can be changed by the 6 keys on the evaluating device. The setting assistance can be selected in the following languages: German, English, French or Spanish.

The product corresponds to the PED directive 97/23/EEC art. 3 par. 3 SEP (Sound Engineering Practice).

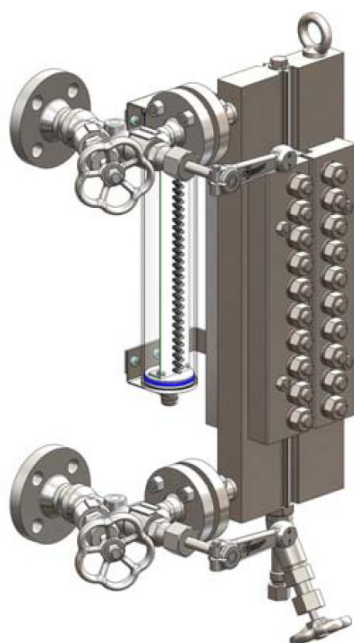
Applied rules as per TRD/AD2000 or ASME-Boilers.

Technical information

- Materials according DIN or ASME
- Process connection according DIN or ASME, flanges or welding end
- 4-28 probes, standard 12 probes
- Illuminated LCD, digital display, current water level is indicated in percent, in absolute or relative numbers.
- ERW supports two separate 4-20mA interfaces for loads up to 500 Ohm
- 4 adjustable switch points and 1 additional fail-safe switch point

All dimensions, weights and other technical data given are subject to revision.

PRODUCT DESCRIPTION



Application and function

The bicolour level gauge black-white is a direct level gauge with illumination and can be used for steam generators.

For best results, observe the liquid level standing directly in front of the sight opening.

In the sight opening, the height of the liquid level is indicated in black and the steam space in white. The product corresponds to the PED directive 97/23/EEC art. 3 par. 3 SEP (Sound Engineering Practice). Applied rules as per TRD/AD2000 or ASME-Boilers.

Possible video transmission of liquid level onto a monitor in the control room.

Technical information

- Body material carbon steel
- As left sided (mapped) or right sided model
- Sight length see table
- With drain valve and ventilation plug
- Illumination device IP67
- Shutoff valves type A220 and A240
- Drain valve type AV500, AV520

Optional

- Body material according to ASME
- Other drain valve

Technical data

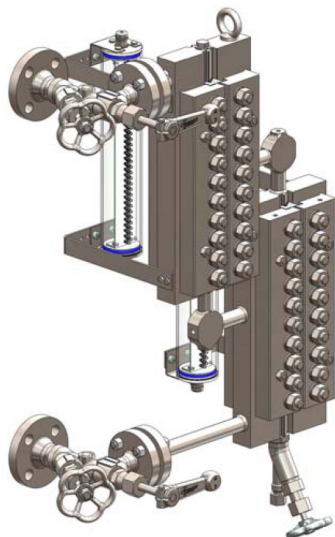
Allowable pressure	PS	[bar]	32	50	80	100	160	200
Allowable temperature	TS	[°C]	239	265	296	312	348	367
Shutoff valve	Type	A220			A240			
Drain valve	Type	AV500			AV520			

Illumination

Protective LED-light tube		
IP67	230V / 50Hz	or 110-120V / 60Hz
D-A1-D-18931-0		

All dimensions, weights and other technical data given are subject to revision.

PRODUCT DESCRIPTION



Application and function

The bicolour level gauge black-white is a direct level gauge with illumination and can be used for steam generators.

For best results, observe the liquid level standing directly in front of the sight opening.

In the sight opening, the height of the liquid level is indicated in black and the steam space in white. The product corresponds to the PED directive 97/23/EEC art. 3 par. 3 SEP (Sound Engineering Practice). Applied rules as per TRD/AD2000 or ASME-Boilers.

Possible video transmission of liquid level onto a monitor in the control room.

Technical information

- Body material carbon steel
- As left sided (mapped) or right sided model
- Sight length see table
- With drain valve and ventilation plug
- Illumination device IP67
- Shutoff valves type A220 and A240
- Drain valve type AV500, AV520

Optional

- Body material according to ASME
- Other drain valve

Technical data

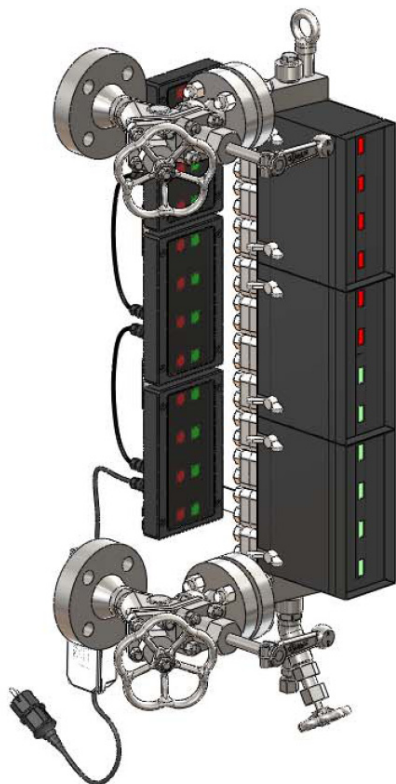
Allowable pressure	PS	[bar]	32	50	80	100	160	200
Allowable temperature	TS	[°C]	239	265	296	312	348	367
Shutoff valve	Type	A220			A240			
Drain valve	Type	AV500			AV520			

Illumination

Protective LED-light tube		
IP67	230V / 50Hz	or 110-120V / 60Hz
D-A1-D-18931-0		

All dimensions, weights and other technical data given are subject to revision.

PRODUCT DESCRIPTION



Application and function

The bicolour level gauge is a direct water level gauge which can be used for steam generators.

In the sight opening, the water space is indicated in green and the steam space in red. The product corresponds to the PED directive 97/23/EEC art. 3 par. 3 SEP (Sound Engineering Practice).

Applied rules are TRD/AD2000 or ASME-Boilers.

Technical information

- Body material carbon steel according to ASME
- As left sided (mapped) or right sided model
- Sight length see table
- With drain valve and ventilation plug
- Illumination device LED Duo SOL6/8, IP67
- Shutoff valves type A220 and A240
- Drain valve type AV500, AV520

Optional

- Other drain valve

Technical data

Allowable pressure	PS [bar]	32	50	80	100	160	200
Allowable temperature	TS [°C]	239	265	296	312	348	367
Shutoff valve	Type	A220			A240		
Drain valve	Type	AV500	AV520				
Illumination	Protection	IP67					

DIMENSIONS

Size	E	5	6	7	8	9	10	11	12	13	14
Sight length	E	260	320	380	440	500	560	620	680	720	800
Dimension	H/J _{min} [mm]	40									
	H/J _{max} [mm]	On request									

Calculation of sight length: $E = (n - 1) \times 60 + 20$

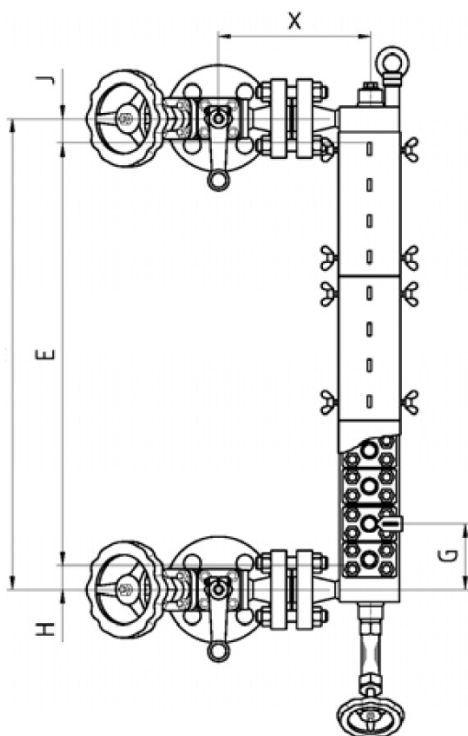
Allowable pressure PS [bar]	Valve	With flanged ends	L [mm]	Welding end	L [mm]	X [mm]
32	A220	DN20	170	DN20		240
50	A150	DN25	129	DN25		240
80	A150	DN25	129	DN25		260
80	A220	DN25	160	DN25	160	260
100	A240	DN25	145	DN25	150	270
160	A240	DN25	155	DN25	150	330
200	A240	DN25	170	DN25	150	330

NB! Depending on the size and version of the level gauge, the customer has to arrange a sufficient brace support (e.g. spring suspension etc.).

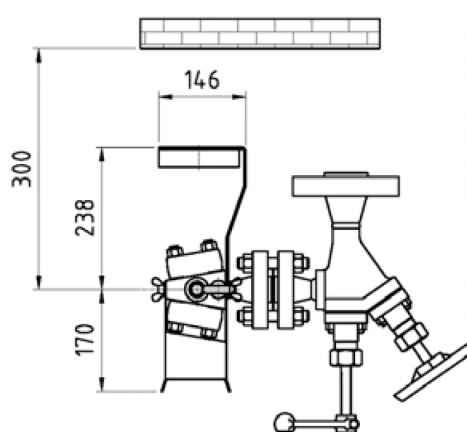
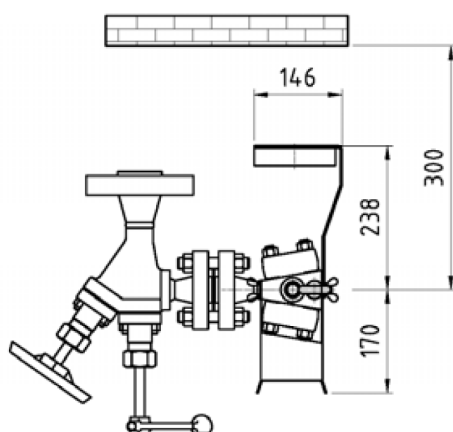
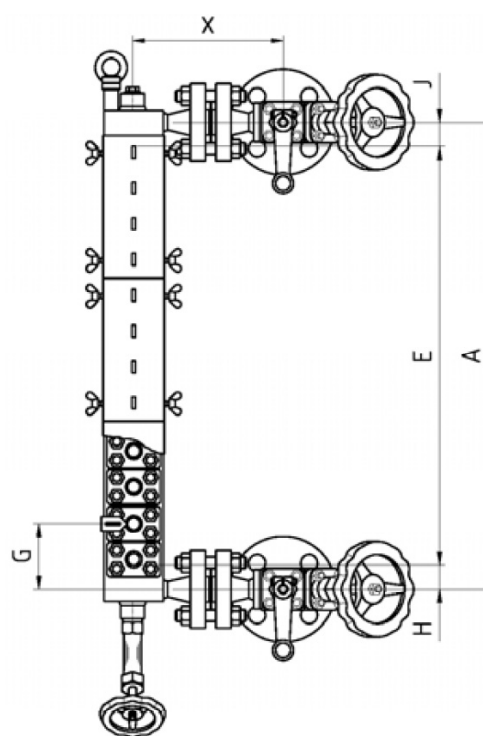
All dimensions, weights and other technical data given are subject to revision.

STANDARD VERSION

Left-sided model



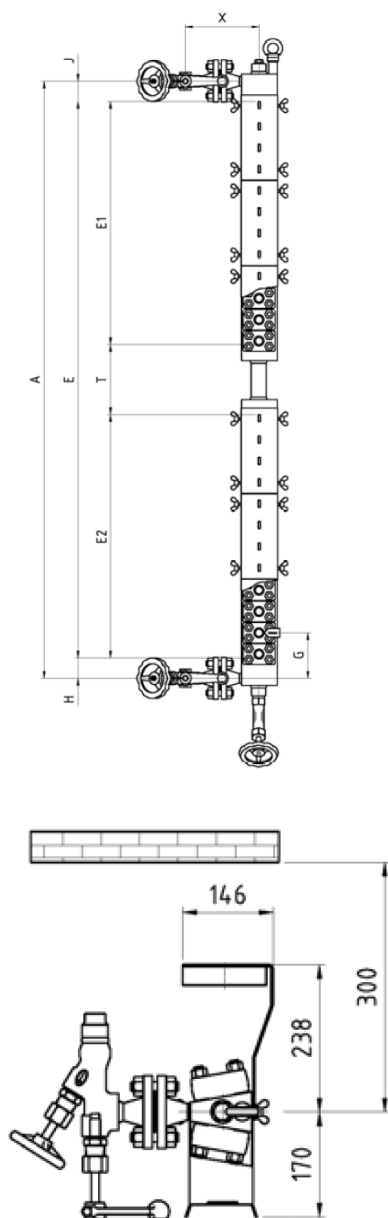
Right-sided model



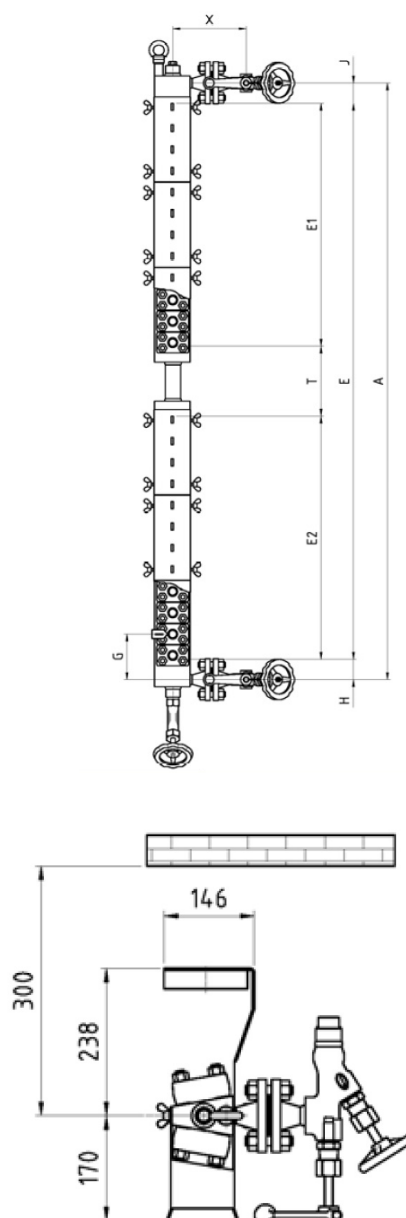
All dimensions, weights and other technical data given are subject to revision.

DIVIDED VERSION

Left-sided model



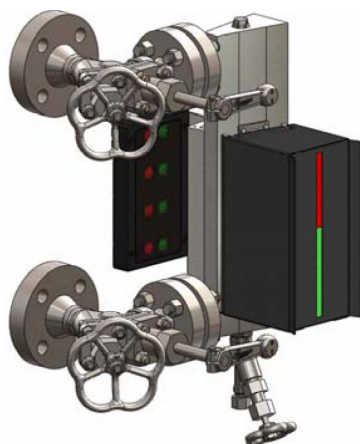
Right-sided model



NB! If sight length E > 800 mm, one porthole is left out and a dead space (T) of 100 mm arises. The position of the dead space depends on the order.

All dimensions, weights and other technical data given are subject to revision.

PRODUCT DESCRIPTION



Application and function

The bicolour level gauge is a direct water level gauge which can be used for steam generators.

In the sight opening, the water space is indicated in green and the steam space in red. The product corresponds to the PED directive 97/23/EEC art. 3 par. 3 SEP (Sound Engineering Practice).

Applied rules are TRD/AD2000 or ASME-Boilers.

Technical information

- Body material carbon steel according to ASME
- As left sided (mapped) or right sided model
- Sight length see table
- With drain valve and ventilation plug
- Illumination device LED Duo SOL6/8, IP67
- Shutoff valves type A130, A150 and A220
- Drain valve type AV500, AV520

Optional

- Other drain valve
- Low level mark

Technical data

Allowable pressure	PS [bar]	20	32	50	80
Allowable temperature	TS [°C]	215	239	265	296
Shutoff valve	Type	A130		A150	
		A220			
Drain valve	Type	AV500		AV520	
Illumination	Type	LED Duo SOL 8			
	Protection	IP67			

DIMENSIONS

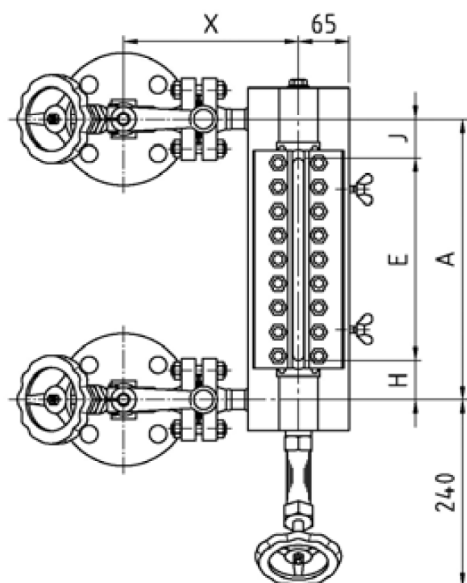
Size	7	
Sight length	E	260
Dimension	H _l min [mm]	25
	H _l max [mm]	On request

Allowable pressure PS [bar]	Valve	With flanged ends	L [mm]	Welding end	L [mm]	X [mm]
32	A130	DN20	170	DN20		215
50	A150	DN25	129	DN25		215
80	A150	DN25	129	DN25		215
80	A220	DN25	160	DN25	160	215

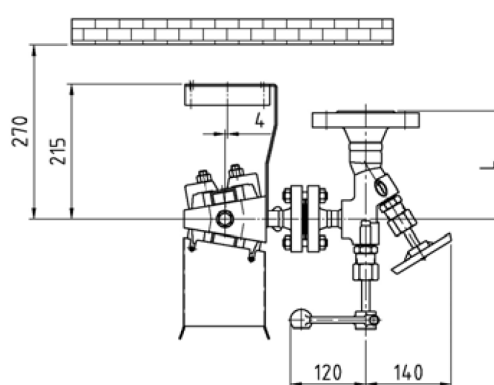
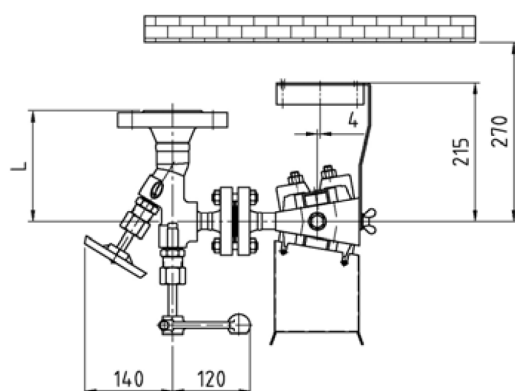
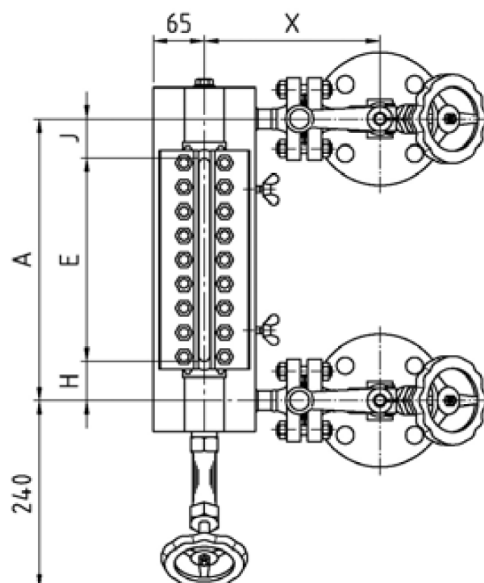
NB! Depending on the size and version of the level gauge, the customer has to arrange a sufficient brace support (e.g. spring suspension etc.).

All dimensions, weights and other technical data given are subject to revision.

Left-sided model



Right-sided model



All dimensions, weights and other technical data given are subject to revision.