

Premium Picture Quality with Advanced Technology

CCVC (Camera Control Via Coaxial Cable)

OSD Remote Control Function

3-Axis Glove Bracket(Patent)

2D+3D (Digital Noise Reduction)

DIS (Digital Image Stabilization)

ABC (Auto IR Brightness Control)

Junction Box (Option)

Anti-Fogged Technology (Option)

CCVC Remote Controller (Option)

IP66

GL76SC-HVFC

600TV Lines

2.8~12mm Vari-Focal Lens

(6~50mm, 9~22mm) -OPTION

ICR-IR Cut Filter Removable

2D + 3D DNR

DIS(Digital Image Stabilization)

High Light Compensation

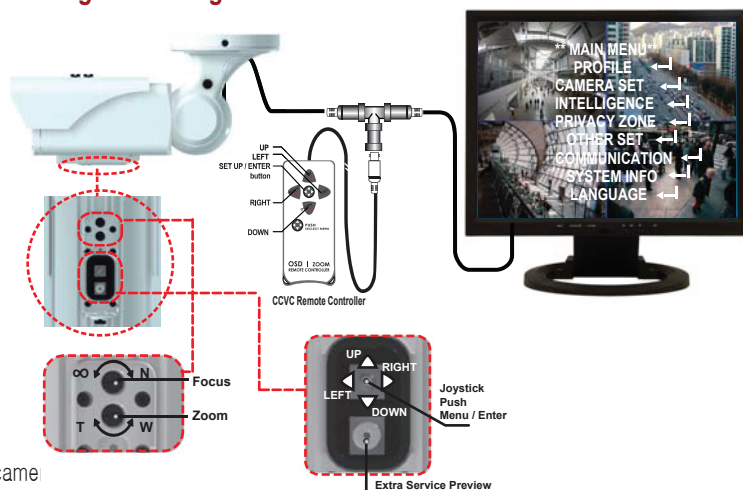
Built In 48IR LEDs

DC 12V

BUILT - IN SERGE CIRCUIT



Revolutionary & Easy OSD control connection through Video Signal!!!



Sens-Up ON



Sens-Up OFF

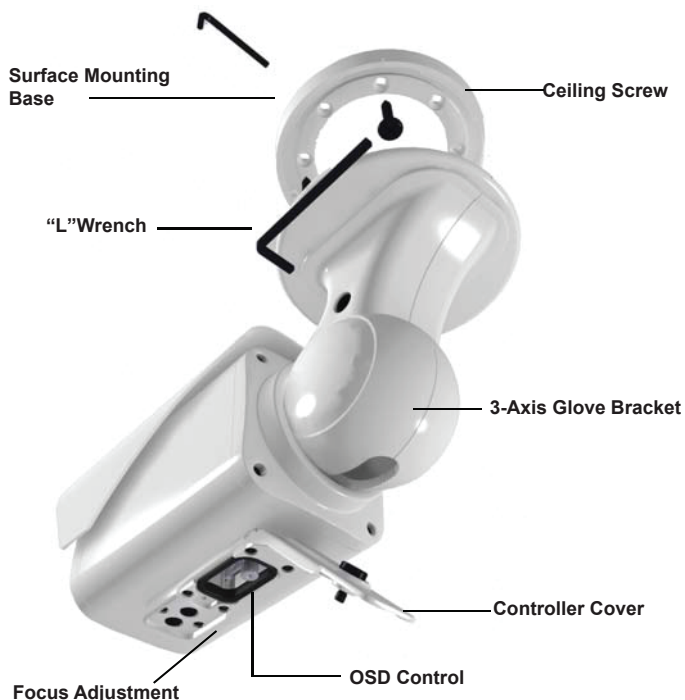
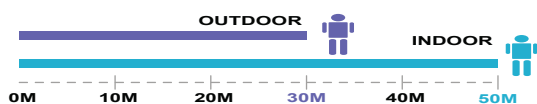


DIS ON



DIS OFF

The IR range shown below are maximum distances that can be achieved using this camera. The environment and camera positioning both affect IR performance.



Specification

Model	GL76SC-HVFC	
Image Pick-Up Device	1/3 Inch Color CCD Format	
TV Systems	NTSC	PAL
Number of Pixels	768(H)x494(V)	752(H)x582(V)
Scanning System	2:1 Interlace	
Sync System	Internal Synchronization	
Horizontal Resolution	More than 600 TV Lines	
Minimum Illumination	CDS ON :0.00006 Lux / CDS OFF:0.1 Lux	
S/N Ration	More than 52dB	
White Balance	ATW /AWC/ MANUAL / OUTDOOR(1800°K~10,500°K)	
Gamma Characteristic	r = 0.45	
Video Output	CVBS : 1.0V p-p 75ohm	
Electronic Shutter	1/60~1/120,000 sec	
BLC	1/50~1/100,000 sec	
Sens Up	Auto /Fixed /Off(x2 ~ x256)	
DNR	On / Off (Selectable, 1 ~ 32 Level Adjustable)	
Day & Night(Color)	On /Auto, Selectable (Electrical)	
Sharpness	On /Off (Level Adjustable)	
Motion Detection	On / Off(8 Programmable Zone)	
Privacy	On / Off(8 Programmable Zone)	
Power Supply	DC12V	
Power Consumption	1.2Am Max.	
Lens	2.8 ~ 12mm DC Auto IRIS Lens	
Operating Temperature	-25°C ~ +60°C, RH95% Max	
Storage Temperature	-20°C ~ +60°C, RH95% Max	
Dimension	102(W) x 150(H) x175(D)mm	
Weight	1750g	